

DOCUMENT RESUME

ED 470 577

HE 035 480

AUTHOR Hinrichsen, Bonnie B.; Jackson, Janet E.; Johnson, Celia E.; Templeton, Rosalyn Anstine; Flannigan, Peggy N.; Lawrence, Betty Jane; Modianos, Doan T.; Skaggs, Jobie L.

TITLE A Study of Faculty Workload as a Means of Improving the Student Learning Environment.

PUB DATE 2002-04-00

NOTE 19p.; Paper presented at the Annual Meeting of the American Educational Research Association (New Orleans, LA, April 1-5, 2002).

PUB TYPE Reports - Research (143) -- Speeches/Meeting Papers (150)

EDRS PRICE EDRS Price MF01/PC01 Plus Postage.

DESCRIPTORS *College Faculty; *Faculty Workload; Higher Education; Research; *Scholarship; Teacher Surveys; *Teaching Methods; Tenure; Time Management

IDENTIFIERS Bradley University IL

ABSTRACT

As part of a campus self-study, more than 100 faculty members as a mid-sized private university met to explore the scholarship of teaching, and in a subsequent conversation, to focus on things that hinder the scholarship of teaching. To assess faculty workloads and determine their effect on the learning environment, a survey was developed and distributed to 301 faculty members in 5 colleges. Usable surveys were returned by 67 faculty members, some from each college. Years of service, tenure status, rank, average class size, reported teaching load, office hours, course preparation time, and research time were all analyzed using the Statistical Package for the Social Sciences. The majority of faculty members reported a 9-hour undergraduate workload, with total hours per week in teaching-related activities averaging 37.5. When research and creative activity were added to total work time, a total of 54.5 hours per week was reported. These data demonstrate that this university faculty spends 68% of total workload on teaching and related activities. A comparison with national figures for similar and different institutions suggests the total work time per week for this university is higher than for other private universities, and that faculty spend more time teaching than is average. Additional study is necessary to determine exactly how teaching load affects the learning environment on campus. (Contains 8 figures and 13 references.) (Author/SLD)

A Study of Faculty Workload as a Means of Improving the Student Learning Environment

Bonnie B. Hinrichsen
Janet E. Jackson
Celia E. Johnson
Rosalyn Anstine Templeton
Peggy N. Flannigan
Betty Jane Lawrence
Doan T. Modianos
Jobie L. Skaggs

College of Education and Health Sciences
Department of Teacher Education
Bradley University
1501 Bradley Ave.
Peoria, IL 61625
USA

PERMISSION TO REPRODUCE AND
DISSEMINATE THIS MATERIAL HAS
BEEN GRANTED BY

R. Templeton

TO THE EDUCATIONAL RESOURCES
INFORMATION CENTER (ERIC)

1

U.S. DEPARTMENT OF EDUCATION
Office of Educational Research and Improvement
EDUCATIONAL RESOURCES INFORMATION
CENTER (ERIC)

- This document has been reproduced as received from the person or organization originating it.
- Minor changes have been made to improve reproduction quality.

- Points of view or opinions stated in this document do not necessarily represent official OERI position or policy.

Voice: (309) 677-3693
Fax: (309) 677-2952
Email: rat@bradley.edu

Paper Presented at the American Educational Research Association's
Annual Meeting in New Orleans
April 2002

ABSTRACT

In the 1999-2000 academic year, over 100 faculty at a mid-sized, private comprehensive university came together for a Carnegie Academy Campus Program Conversation. The goal of the conversation was to explore the scholarship of teaching. During Conversation One, the following definition emerged: **"The scholarship of teaching is the shared, systematic, and critical inquiry and assessment of teaching and learning"**. In a subsequent Conversation Two, the discussion focused on things that hinder the scholarship of teaching. Faculty workload, that is, heavy workloads, were identified as hindrances to the scholarship of teaching. In order to assess faculty workloads and determine their effect on the learning environment, a faculty survey was developed. The faculty workload survey was distributed through campus mail to all 301 faculty members in five colleges. Usable surveys were returned by 67 faculty members; there were respondents from each college. Years of service, tenure status, rank, average class size, reported teaching load, office hours, course preparation time and research time were all analyzed using SPSS (SPSS, 1994). Descriptive statistics and (frequencies and measures of central tendency) were run. The majority of faculty reported a nine hour undergraduate workload; total hours spent per week in teaching related activities averaged 37.5 hours per week. When research and creative activity were added to total work time, a total of 54.5 hours per week was reported. These data demonstrated that this university faculty spend 68% of their total workload on teaching and related activities. A comparison of similar and different institutions was done. Future conversations need to be held in order to determine exactly how teaching load affects the learning environment on campus.

PURPOSE

Bradley University, a mid-sized, private university located in Peoria, IL, advocates a commitment to excellence in teaching and learning: "... is committed to excellence in teaching and learning" (2002-2003 Undergraduate Catalog, p.5). In keeping with that commitment, the university administrators made the decision to examine faculty workload and the impact teaching schedules and related academic work have on the students' learning environment. This examination came in the form of two Carnegie Academy Campus Program Conversations. The purpose of this study was to investigate faculty workload on Bradley's campus in order to improve the students' scholarship of learning and learning environment.

PERSPECTIVES

The issue of faculty workload has been continuously studied over time. (Meyer, 1998). Over 30 years ago, the American Association of University Professors (AAUP) adopted a statement on faculty workload (ACADEME, 2000). Significant changes in education have taken place since that time. Education today emphasizes independent studies, new materials such as the internet and web based courses, international experiences as well as interdisciplinary approaches which have prompted the need for revision of these guidelines.

Over the past 20 years, changes in amounts of time faculty spent in teaching, advising, and research activities have also been examined. Researchers (Milem, Berger, and Dey, 2000) found that institutions are becoming more similar in their patterns of faculty time allocation, especially time spent on research. A multilevel modeling method to analyze research productivity was used by Porter and Umbach (2000) who concluded

that faculty work is extremely complex and cannot be explained using single measures for research productivity.

Krahenbuhl (1998) also looked at faculty work – how do faculty members spend their time? Is the distribution effort appropriate in terms of kind, amount and quality? What is the best use of faculty time from the perspectives of students, taxpayers, a democratic society in need of educated people, and the employees of our graduates? Krahenbuhl goes on to suggest that it is learning, not teaching, that matters the most and that faculty –guided learning occurs in many settings beyond the classroom.

Middaugh (1998) studied teaching load among tenured and tenure track faculty at a variety of institutions of higher learning. He concluded that tenured and tenure-track faculty generate a much larger proportion of undergraduate teaching activity than might be expected. A collaborative effort to measure faculty work was done by Bensimon and O’Neil (1998) in order to produce an assessment instrument that documents both an individual’s productivity in research, teaching, and service as well as his or her worth in relation to the institution’s goals. Fine and Nazworth (1999) addressed faculty’s perceptions on as “learning community” participants. Older faculty tended not to be as concerned with the benefits of participation as younger faculty.

In 1996, the AAUP publication, *ACADEME*, included several articles related to faculty workload. Clausen (1996) described a study done by the Pennsylvania State legislature in 1995. This Select Committee on Higher Education examined faculty activities, including teaching loads, research, public service, and institutional service. The results of the study indicated that teaching is the major responsibility of most faculty members. Additionally, in four-year institutions where teaching loads were typically nine

to twelve hours per week, preparation, grading, laboratory supervision, conference with students, curricular planning, and keeping up in one's field resulted in a total of 45 to 55 hours worked per week (Clausen, 1996).

A second article in the *ACADEME* (Shelton and Skaggs, 1996) examined how faculty spend their time. The data reported in this article is the work of Robert Blackburn and Janet Lawrence's 1995 study, "Faculty at Work" who gathered workload information from 4,280 full-time faculty members. The researchers found that faculty who teach more, publish less; and the higher the teaching load, the less time professors spend on teaching-related work per course. Thus, a quality of teaching issue was introduced. The authors suggested that good teaching requires a mixture of qualities, and that all types of intellectual activity by faculty should be valued because they benefit both the community inside and outside the university.

A more recent report in *ACADEME* (2000) titled "Interpretive Comments on the Statement on Faculty Workload", reinterpreted the AAUP's 1969 statement on workload. Maximum and preferred workloads were reviewed and it was suggested that differences in workloads should correspond to differing research and instructional expectations at different kinds of institutions. In the introductory paragraph, members of Committee C reiterated that "no single formula for an equitable faculty workload can be devised for all of American higher education"(p.70). The guidelines for maximum teaching load are as follows: undergraduate, 12 hours per week with no more than 6 separate course preps for the year; for partial or total graduate instruction, 9 hours per week. However, preferred teaching load for undergraduate instruction is nine hours per week and 6 hours per week for part or total graduate teaching. Committee C

recommended that faculty participate fully in the determination of workload policy. The following inequities in the distribution of workload were identified: The difficulty of courses (number of different preparations, new courses, level of difficulty in course content, and size of classes taught) were examined. Research – which the Committee defined as “exploratory work in some special field of interest within the discipline” (p.72) – should be recognized whether it leads to publication or not. If the university emphasizes original research, teaching load should be at six hours. Responsibilities other than teaching and research such as committee work, administrative tasks, and student counseling (advising) should also be considered when determining faculty workload.

The City University of New York (CUNY) measured faculty teaching workload according to credit hours taught. Their audit system is designed to measure and compare teaching workload among faculty (2000). Some of the problems the University experienced with the audit were that faculty submitted the maximum credit hours permitted under the contract rather than actual workload, some faculty showed NO workload, and some faculty showed workload for non-structured classes. They concluded that the University must be able to detect and correct inaccurate and incomplete data and document all formulas and guidelines used in reporting teaching workload.

Middaugh’s (2001) book intends to provide consistent and reliable quantitative and qualitative information on faculty productivity and accountability. The underlying theme is an attempt to counter criticism from the public and policy makers about what faculty do.

Bellas and Toutkoushian (1999) examined 14,614 full time faculty in order to define work hours, research productivity, and allocation of work time among teaching,

research and service. This study focused on gender, race/ethnicity, and marital/parental status but has implications for workload and productivity in general.

The issue of faculty workload and its effect on the student learning environment needs be continually examined. The faculty workload project at Bradley University is one attempt to evaluate the issue of faculty workload.

METHODS

Researchers collected quantitative data to assess faculty workload. Based on the results of Bradley University's Carnegie Academy Campus Program, held in January 2000, a survey was developed. The paper and pencil Faculty Workload Survey included 16 descriptive items addressing demographics, current teaching loads, and description of faculty responsibilities. These 16 items were analyzed with SPSS (SPSS, 1994). Descriptive statistics (frequencies and measures of central tendency) were run. Goodness-of-fit and mean differences were determined where appropriate. Data compiled from the surveys was compared to other universities: public and private research universities, public and private doctoral granting universities, and public and private comprehensive universities (US Education Department, 1991).

DATA SOURCE

Bradley University is an independent, privately endowed institution located on a 75 acre campus in Peoria, Illinois. Bradley has an enrollment of approximately 5,000 undergraduate and 1,000 graduate students. Bradley's faculty The Faculty Workload Survey (Appendix A) was distributed through campus mail to 301 faculty members in the

five colleges: Business Administration, Communication and Fine Arts, Education and Health Sciences, Engineering and Technology, and Liberal Arts and Sciences

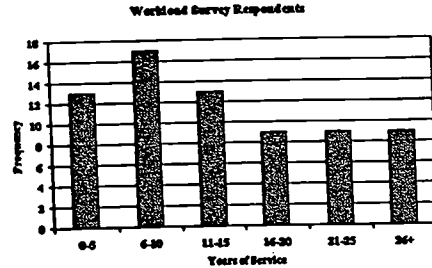
RESULTS

The tables below reflect the data collected in the areas of years of service, undergraduate teaching loads, community service hours, weekly office hours, and course development, grading and test development per week.

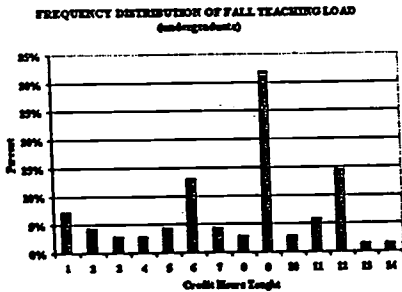
Survey Results

- ✓ Usable surveys were returned by 67 faculty
- ✓ 11 BUS, 6 CFA, 10 EGT, 16 EHS, 24 LAS
- ✓ 17 Prof., 24 Assoc. Prof., 19 Asst. Prof., 4 Lecturer, 3 not specified
- ✓ 76% with tenure, 24% not tenured (at BU, 68% tenured)
- ✓ 58% of respondents were male, 42% female

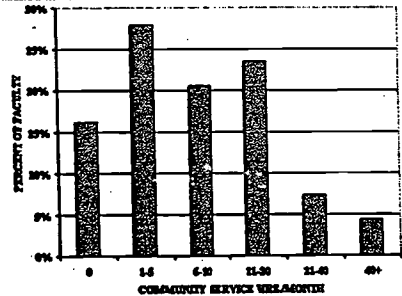
Years of Service by Faculty



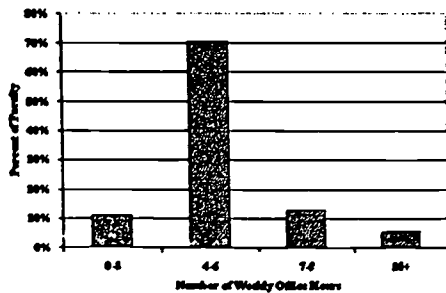
Undergraduate Teaching Loads



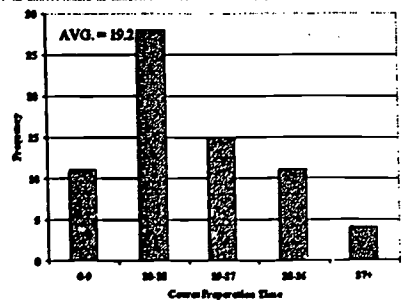
Community Service Hours By Faculty



Weekly Office Hours



Course Preparation, Grading & Test Development Time Per Week



RESULTS

The tables below reflect the data collected in the areas of time spent in teaching related activities, time spent in research and creative production, total work time, and comparison tables between Bradley and other universities.

Time Spent Per Week In Teaching Related Activities	
✓ Contact Hours =	13.4
✓ Course Preparation =	10.9
✓ Grading Papers =	6.7
✓ Test Development =	1.6
✓ Course Related Professional Development =	2.2
✓ Supervise Students =	2.4
✓ TOTAL =	37.2 hours per week

Time Per Week in Research & Creative Production	
✓ Develop or Apply Knowledge =	6.3 hrs.
✓ Present or Exhibit Work =	4.0
✓ TOTAL =	10.3

TOTAL WORK TIME	
✓ Teaching =	37.2 hrs. (68.3% of total time)
✓ Research & Creative Production =	10.3 hrs. (18.9% of total time)
✓ Other Activities =	7.0 hrs. (12.8% of total time)
✓ TOTAL	54.5 Hours per Week

Percent of Total Workload Spent on Research Activities	
✓ BU Survey	19% of Total Workload
✓ US Education Dept. 1991 Data	
- Public Research Univ.	29%
- Private Research Univ.	30
- Public Doctoral	22
- Private Doctoral	27
- Public Comprehensive	11
- Private Comprehensive	09

BU Survey and Other National Data on Faculty Workloads	
✓ BU Survey	54.5 hrs per week
✓ US Education Dept. 1991 Data	
- Public Research Univ.	57
- Private Res. Univ.	56
- Public Doctoral	55
- Private Doctoral	53
- Public Comprehensive	52
- Private Comprehensive	51

Percent of Total Workload Spent on Teaching & Related Activities	
✓ BU Survey	68% of Total Workload
✓ US Education Dept. 1991 Data	
- Public Research Univ.	43%
- Private Research Univ.	40
- Public Doctoral	47
- Private Doctoral	39
- Public Comprehensive	62
- Private Comprehensive	62

DISCUSSION

The intent of the research project was to identify workload and its effect on the learning environment at Bradley University. The workload survey was developed and distributed to all faculty on campus. The response to the survey was disappointing. A 22% response rate was achieved. In retrospect, the survey may have been too "busy". A lot of information had to be fit into a small amount of space. Perhaps the campus mail was not the best approach. The Bradley campus is very much internet connected. We may have had a better response had the survey been posted on-line. There could be some element of suspicion as to why we wanted to know numbers in so many categories. In addition, some questions asked for "hours per year" in an attempt to average. This may have been too difficult to compute.

In any event, the data that were collected revealed some interesting trends. The majority of respondents had between six and ten years of service. At our institution, candidates achieve tenure at the end of the sixth year. Perhaps those who responded were at the peak of their "productivity" period. By far, nine hours was the most commonly reported credit hours taught. In some departments, nursing for instance, this may translate into more than nine contact hours due to clinical labs. Hostile critics of academia would view a "six to twelve hour week ... as "part-time versus full-time work" (Clausen, 1996). Office hours reported were in the 4 - 6 range. In this author's memory, five hours are required of faculty so this number is obviously being observed. Course preparation, grading and test development consumed an average of 19.2 hours per week. The total time spent per week in teaching and related activities was 37.2 hours which is very close to a typical forty hour week.

When data from Bradley were compared to other national data the following conclusions were drawn. Bradley's "Total Work Time" per week is three hours higher than that for other private comprehensive universities (54.5 versus 51 hours). Faculty at Bradley spend a higher percentage of their time on teaching than do other private comprehensive universities (68% versus 62%); and, a much higher percentage than public or private research universities (68% versus 40-43%). Due to the mission statement that Bradley is "committed to teaching and learning" it makes sense that teaching consumes a higher percentage of time than does research and other scholarly activity.

IMPORTANCE

The study of faculty workload as it affects the learning environment of students is important. If faculty are dissatisfied with their workload, feel overwhelmed, and find themselves not achieving good student results, they suffer and consequently, students suffer. The time spent in developing creative and attractive course materials and attending to individual needs of students is immeasurable. Studies of faculty workload are needed to inform faculty of where they stand with their peer group. Knowledge about what is "average" or what is "common or expected" can help faculty assess where they stand with their own situation.

LIMITATIONS

The research reported in this paper was at a mid-sized, private, comprehensive university in the Midwest. The sample was small. However, the data reveal that this institution is not that diverse from other similar ones.

FUTURE RESEARCH

Faculty workload needs to be continuously studied. Workload among various disciplines, for instance, education, physical therapy, and nursing, needs to be studied because of the unique nature of their clinical obligations. Workload needs to be studied so that evidence is available to those who would argue that lack of creative production and excellent student evaluations can be tied to "workload - heavy".

REFERENCES

American Association of University Professors (AAUP) (2000). Interpretive comments on the statement on faculty workload (Committee C on colleges and University Teaching, Research, and Publication). ACADEME, 82, (5), 69 – 72.

Bellas, M.L. & Toutkoushian, R.K. (1999). Faculty time allocations and research productivity: gender, race, and family effects. Review of Higher Education 22, (4), 367 – 90.

City University of New York (2000). Measuring faculty teaching workload: Data reliability (Report No.SNY-OSC-R-99-S-6). New York (ERIC Document Reproduction Service No. ED 446 666)

Clausen, C., (1996). Faculty workloads and legislative curiosity. ACADEME, 82, (5), 40 – 44.

Fine, T.S. & Nazworth, N. (1999, March). Learning communities and the academic career: perspectives on faculty participation. Paper presented at the meeting of On the Horizon, journal of information sources on education and change, Tampa, FL.

Krahenbuhl, G. (1998). Faculty work. Change, 30 (6), 18 – 25.

Meyer, K (1998). Faculty workload studies: Perspectives, needs, and future directions. ERIC Clearinghouse on Higher Education, The George Washington University, in cooperation with ASHE, Association for the Study of Higher Education.

Middaugh, M.F. (1998). How much do faculty really teach? Planning for Higher Education, 27 (2), 1 – 11.

Middaugh, M.F. (2001). Understanding faculty productivity: standards and benchmarks for colleges and universities. CA: Jossey-Bass.

Milem, J.F., Berger, J.B. & Dey, E.L. (2000). Faculty time allocation: A study of change over twenty years. Journal of Higher Education, 71 (4), 454-75.

Porter, S.R. & Umbach, P. (2000, May). Analyzing faculty workload data using multilevel modeling. Paper presented at the AIR 2000 Annual Forum, Maryland, (ERIC Document Reproduction Service No. ED 446 504).

Shelton, B.A. & Skaggs, S. (1996). How faculty members spend their time. ACADEME, 82 (5), 16 – 20.

SPSS, (1994). SPSS-X user's guide, 4th ed. Chicago: author.

APPENDIX A

Carnegie Inquiry Group Faculty Work Load Survey

Please complete both sides of this survey. Place on top of the Motivated Learners' Survey, fold both together so that the return address is showing, staple and place in house mail by April 23, 2001.

Demographics

- 1) College CFA _____ EHS _____ LAS _____ BUS _____ EGT _____
- 2) Department _____ 3) Rank _____
- 4) Years of Service 0-5 _____ 6-10 _____ 11-15 _____ 16-20 _____ 21-25 _____ 26+ _____
- 5) Tenured Yes _____ No _____ 6) Gender M _____ F _____

7) a. Fall Semester

Current Teaching Load

7) b. Spring Semester

Semester hours/week

Undergraduate _____ Graduate _____

Contact hours/week

Class _____ Practicum _____ Advisement _____

Other —please specify _____ (_____)

Average class size _____ Average lab size _____

Ratio of semester hours to lab hours (circle)

(a) 1:1 (b) 1:2 (c) 1:3 (d) 1:4 (e) other

Semester hours/week

Undergraduate _____ Graduate _____

Contact hours/week

Class _____ Practicum _____ Advisement _____

Other —please specify _____ (_____)

Average class size _____ Average lab size _____

Ratio of semester hours to lab hours (circle)

(a) 1:1 (b) 1:2 (c) 1:3 (d) 1:4 (e) other

Description of Responsibilities

- 8) Briefly describe any practicums in which you are involved (ie, hands on lab, site visits, student teaching or clinical supervision, observation, studio time)

Do you get credit hours for practicums? Yes _____ No _____

Average number of students per practicum: _____

9) Advisement

a) How many academic advisees? Undergraduate _____ Graduate _____

b) How many research/thesis advisees? _____

c) Do you have work load credit for advisement? _____

d) If so, what is the ratio of students to credit hours? _____

e) How many total hours do you advise students per semester? _____

10) Committees

a) How many committees are you on?

Department _____ College _____ University _____

b) Is committee membership a requirement? _____

c) How many hours per month do you spend on committee meetings? _____

BEST COPY AVAILABLE

Description of Responsibilities, continued

(side 2)

- 11) Community Service: How many hours per month? _____
Describe _____
- 12) Office hours: Are you required to have office hours? Yes ___ No ___
If so, how many? _____ Actual # worked _____
- 13) Course preparation time
a) How many courses are you teaching for the first time? _____
b) How many hours of course preparation per week? _____
c) Within your semester load, do you teach more than one section of the same course? Yes ___ No ___
- 14) Student evaluation: How many hours per week are spent evaluating students?
a) Grading papers _____ b) Independent studies _____ c) Studio _____
d) Test development _____ e) Clinical performance _____
- 15) Professional Development: Describe professional development activities related to course work that you are involved in on a regular basis (i.e. BlackBoard Inc., technology, etc.) _____ Hrs per mo. _____
- 16) Over one academic year, how many hours you spend on the following scholarly and creative production projects?
a) Creating new knowledge or new works (designing and conducting experiments, fieldwork, data analysis & integrating new knowledge into industry, community & culture. Composition, playwriting, creating art, video & multimedia.) _____ Hrs per year
b) Working with existing knowledge and existing works (performance of music & theater, design, directing plays, library work, study, practice, synthesis or summary of existing knowledge, self-improvement activities such as learning foreign language to study work in original language, learning new computer skills related to research and analysis.) _____ Hrs per year
c) Performance & exhibition and scholarly publications (assembling, writing & publishing results of research and/or creative production, on or off campus delivery of concerts, performances, exhibitions, recordings, broadcasts, & interactive media.) _____ Hrs per year
d) Presentations of research or about creative production (lectures, seminars, workshops, etc. presented at professional meetings or other public settings.) _____ Hrs per year
- 17) Over one academic year, what percent of your total time do you spend doing
teaching _____% scholarly & creative production _____%
service _____%

Comments: (please use an additional sheet if needed)



U.S. Department of Education
Office of Educational Research and Improvement (OERI)
National Library of Education (NLE)
Educational Resources Information Center (ERIC)

H2035 480



REPRODUCTION RELEASE

(Specific Document)

I. DOCUMENT IDENTIFICATION:

Title: A STUDY OF FACULTY WORKLOAD AS A MEANS OF IMPROVING THE STUDENT LEARNING ENVIRONMENT	
Author(s): Bonnie E. Hinrichsen, Janet E. Jackson, Celia E. Johnson, Rosalyn Anstine Templeton,	
Corporate Source: Peggy N. Flannigan, Betty Jane Lawrence, Doan T. Modianos, and Jobie L. Skaggs	Publication Date:

II. REPRODUCTION RELEASE:

In order to disseminate as widely as possible timely and significant materials of interest to the educational community, documents announced in the monthly abstract journal of the ERIC system, *Resources in Education* (RIE), are usually made available to users in microfiche, reproduced paper copy, and electronic media, and sold through the ERIC Document Reproduction Service (EDRS). Credit is given to the source of each document, and, if reproduction release is granted, one of the following notices is affixed to the document.

If permission is granted to reproduce and disseminate the identified document, please CHECK ONE of the following three options and sign at the bottom of the page.

The sample sticker shown below will be affixed to all Level 1 documents

PERMISSION TO REPRODUCE AND DISSEMINATE THIS MATERIAL HAS BEEN GRANTED BY

Sample

TO THE EDUCATIONAL RESOURCES INFORMATION CENTER (ERIC)

1

Level 1

↑

Check here for Level 1 release, permitting reproduction and dissemination in microfiche or other ERIC archival media (e.g., electronic) and paper copy.

The sample sticker shown below will be affixed to all Level 2A documents

PERMISSION TO REPRODUCE AND DISSEMINATE THIS MATERIAL IN MICROFICHE, AND IN ELECTRONIC MEDIA FOR ERIC COLLECTION SUBSCRIBERS ONLY, HAS BEEN GRANTED BY

Sample

TO THE EDUCATIONAL RESOURCES INFORMATION CENTER (ERIC)

2A

Level 2A

↑

Check here for Level 2A release, permitting reproduction and dissemination in microfiche and in electronic media for ERIC archival collection subscribers only

The sample sticker shown below will be affixed to all Level 2B documents

PERMISSION TO REPRODUCE AND DISSEMINATE THIS MATERIAL IN MICROFICHE ONLY HAS BEEN GRANTED BY

Sample

TO THE EDUCATIONAL RESOURCES INFORMATION CENTER (ERIC)

2B

Level 2B

↑

Check here for Level 2B release, permitting reproduction and dissemination in microfiche only

Documents will be processed as indicated provided reproduction quality permits.
If permission to reproduce is granted, but no box is checked, documents will be processed at Level 1.

I hereby grant to the Educational Resources Information Center (ERIC) nonexclusive permission to reproduce and disseminate this document as indicated above. Reproduction from the ERIC microfiche or electronic media by persons other than ERIC employees and its system contractors requires permission from the copyright holder. Exception is made for non-profit reproduction by libraries and other service agencies to satisfy information needs of educators in response to discrete inquiries.

Sign here, → please

Signature: <i>Rosalyn Anstine Templeton</i>	Printed Name/Position/Title: Rosalyn Anstine Templeton, Ph.D.	
Organization/Address: Bradley University 1501 W. Bradley Ave. Peoria, IL 61625	Telephone: 309 677 3693	FAX: 309677 2952
	E-Mail Address: rat@bradley.edu	Date: 10/14/02



(over)

III. DOCUMENT AVAILABILITY INFORMATION (FROM NON-ERIC SOURCE):

If permission to reproduce is not granted to ERIC, or, if you wish ERIC to cite the availability of the document from another source, please provide the following information regarding the availability of the document. (ERIC will not announce a document unless it is publicly available, and a dependable source can be specified. Contributors should also be aware that ERIC selection criteria are significantly more stringent for documents that cannot be made available through EDRS.)

Publisher/Distributor:
Address:
Price:

IV. REFERRAL OF ERIC TO COPYRIGHT/REPRODUCTION RIGHTS HOLDER:

If the right to grant this reproduction release is held by someone other than the addressee, please provide the appropriate name and address:

Name:
Address:

V. WHERE TO SEND THIS FORM:

Send this form to the following ERIC Clearinghouse: ERIC Clearinghouse on Teaching and Teacher Education 1307 New York Ave., NW Suite 300 Washington, DC 20005-4701
--

However, if solicited by the ERIC Facility, or if making an unsolicited contribution to ERIC, return this form (and the document being contributed) to:

ERIC Processing and Reference Facility
4483-A Forbes Boulevard
Lanham, Maryland 20706

Telephone: 301-552-4200
Toll Free: 800-799-3742
FAX: 301-552-4700
e-mail: info@ericfac.piccard.csc.com
WWW: <http://ericfacility.org>